



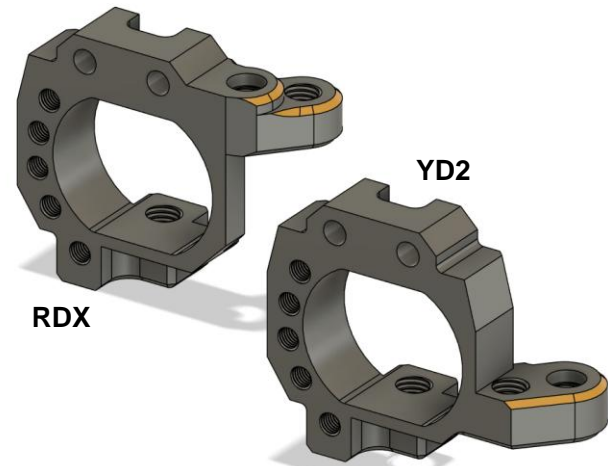
LOCATION:
25.045904, 55.231694

G-Buster Knuckle Technical Datasheet

G-Buster Feature Set

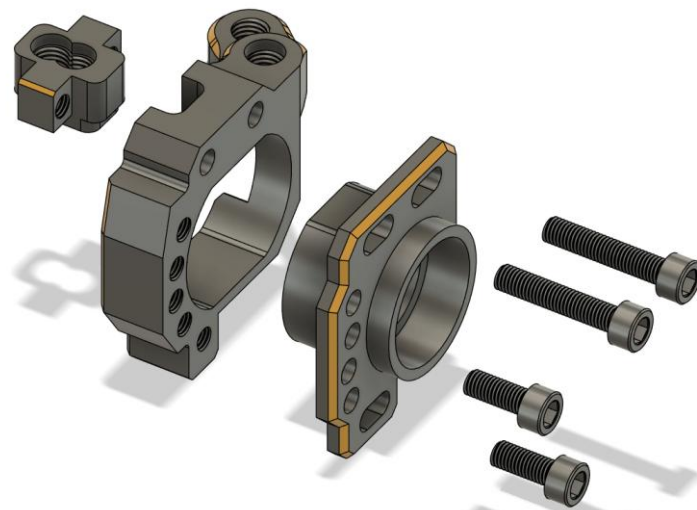
Design / Specs:

- KPI adjustable: 4 settings
- Displaced caster (trailing angle): 6 settings
- Independent displaced caster adjustment
- Height: 20.5mm
- Weight: 5.2g (base weight, per side)
- YD2 (universal) and RDX versions
- Accepts 5x10x4mm bearings
- Accepts YD2/RDX axels
- Accepts M3 stoppers
- * Recommended stopper length: YD 15mm, RDX 12mm
- * Recommended rod end: YD2 angle/bent, RDX straight

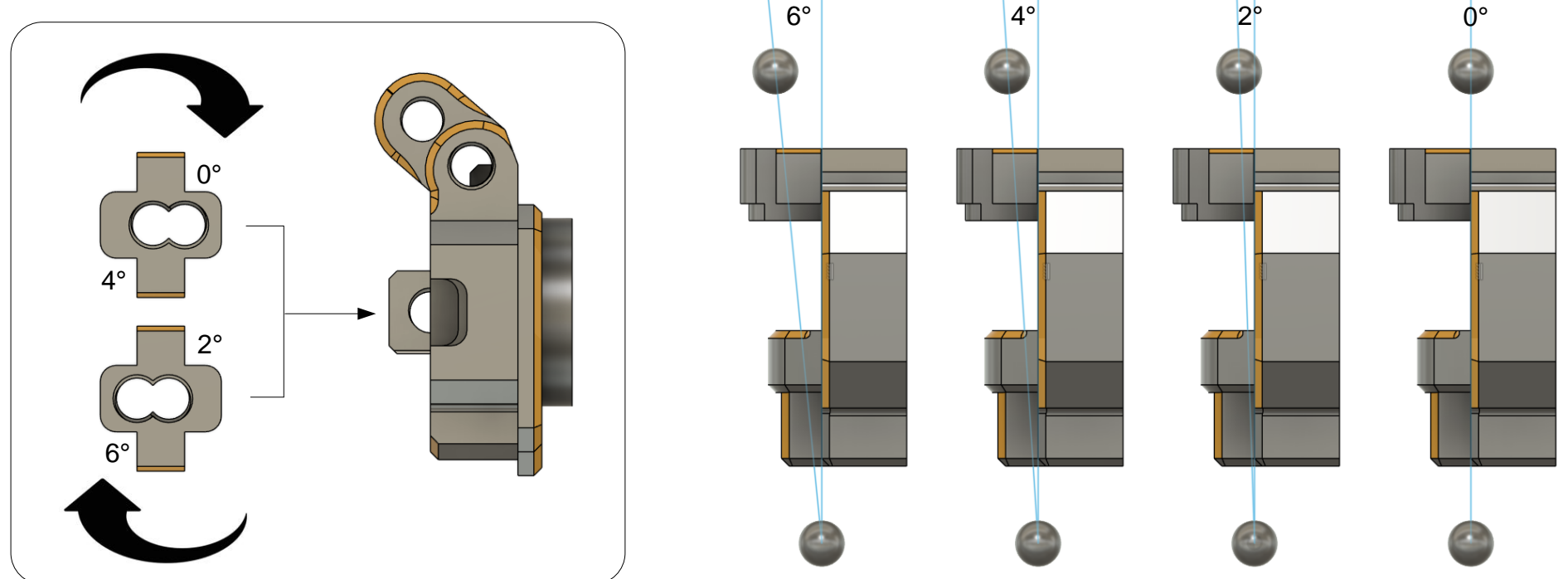


Part List:

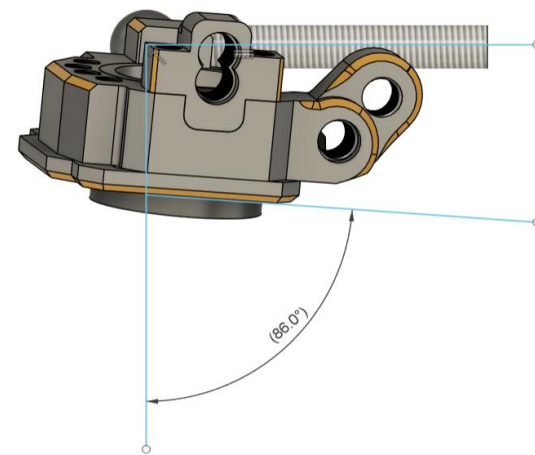
- Main housing (qty 2, right and left)
- Bearing carrier (qty 2, right and left)
- Kingpin adapter (qty 2)
- m2x10mm cap head screw (qty 4)
- m2x 5mm cap head screw (qty 4)



G-Buster: King Pin Inclination (SAI)



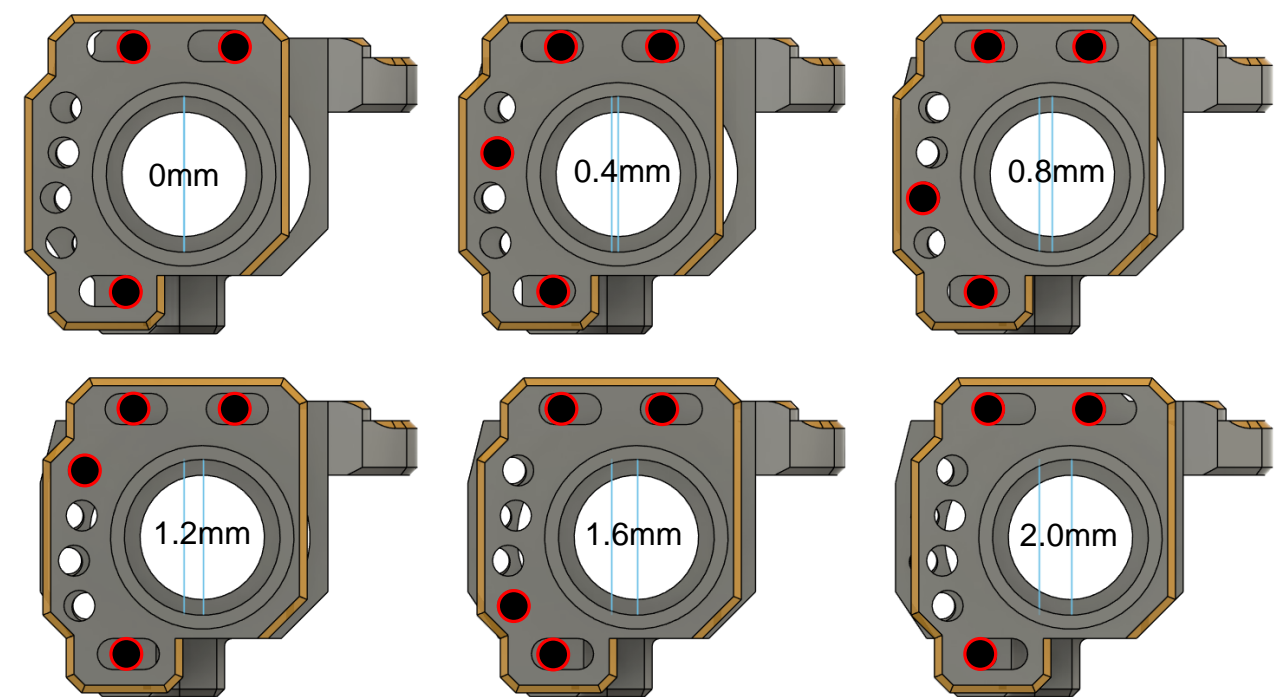
G-Buster: Steering Angle



Lead wheel angle 86° (settings below)

- Camber: 9°
- Caster: 6°
- Toe: 1.5°
- KPI: 2°
- Displaced Caster 0.4mm
- Stopper: 3mm
- YD2 angle/bent rod end
- RDX straight rod end

G-Buster: Displaced Caster



● = screw position